



TANGIBLE SECURITY
into your Safety
Deposit Box



The Building
A ten-story, general-commercial and office building of the most modern design and improved construction, and with many distinctive features.

The Site
An entire City Block in the heart of Montreal's select uptown shopping district. At the busy corner where St. Catherine and Peel Streets intersect, embracing the area bounded by these, by Metcalfe Street and by Dominion Square. Close to the Railway Stations and within immediate reach of the great hotels. Experts in realty values consider this property to be unequalled in Canada as the site for a building of this type.

When you buy a DOMINION SQUARE CORPORATION 6% BOND you participate in an investment secured by a specific First Mortgage on this building and its site—an actual cash investment of \$7,750,000 against a \$5,000,000 bond issue.

The bonds of this issue afford an opportunity for sound and attractive investment. They are due April 1st, 1948. Interest and principal payable throughout Canada and in New York.

Price: Par and accrued interest.

Complete information on request

The National City Company

Head Office—St. James and St. Peter Streets—Montreal
10 King Street East TORONTO 204 Bloor Street Building OTTAWA 71 St. Peter Street QUEBEC



FALL OPENING

THURSDAY, September 20th

From 2 to 5 p.m. and Following Days

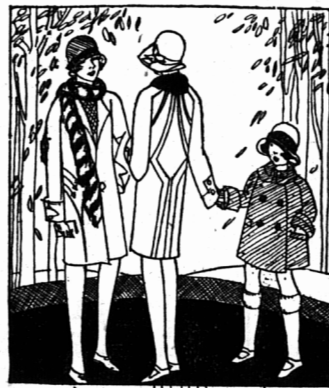
You Are Bid a Cordial Welcome to
**Our Formal Display of the
AUTUMN FASHIONS**

Our windows will tell the story of the fashion glories of the different departments—a panorama of the apparel—Millinery, Coats, Dresses, Dress Goods, Lingerie and other accessories depicting the unfolding of the New Season's Fashions.

Come and Inspect Even if You Don't Select

PROWSE BROS Ltd

"The Whole Town's Talking"



AMERICAN RAILWAY TO RUN TO QUEBEC

QUEBEC, Sept. 18.—That there is every possibility that the Delaware and Hudson Railway would build a line into Quebec in the near future was the statement made by Mr. L. F. Loree, president of the company, upon his arrival at the Frontenac today.

New York run in order to handle the influx of tourists," he declared. Mr. Loree pointed out that it would be a comparatively simple matter, as the construction of new lines go, to inaugurate a run direct to Quebec in view of the D. & H. Line which already operates on the south shore.

FOR SAFE and SIMPLE INVESTMENT

YOU do not have to be a financial expert to appreciate the soundness of companies like United States Steel, the New York Central Railroad and the other companies in which Federated Capital Corporation owns stock.

You know that such companies will grow as the country grows, for they administer to a nation's primary needs. And with expansion their securities will also increase in value.

Federated Capital Corporation is a successful trust. Its most recent earnings statement revealed that its common stock is selling for only four times its net earnings—as compared with ten or more times in the case of the average common stock.

Our folder gives you full information—send for your copy

Eastern Securities Co, Ltd
INVESTMENT BANKERS
CHARLOTTETOWN
MONTREAL HALIFAX ST. JOHN

Central Guardian

THE MARKETS—There was a fair attendance at the market yesterday. Eggs sold at 38c; butter 38c; chickens 90c; fowl 1.25; ducks 1.00; cranberries 15c; blueberries 20c; blackberries 25c box; sassailla berries 15c; peas 30c; hay 45c to 50c; straw 35c; oats 40c to 45c; turnips 20c and potatoes 45c. There was a fair offering of fresh fish at the usual prices.

CORRECTION — Mr. Wilbert Drake, brother of Clement Drake, unfortunate victim of last week's tragedy, was in the city yesterday. Mr. Drake showed the Guardian various registration papers proving that his late brother's car was registered in the name of Clement Drake, No. 95199, Dept. of Public Works, Boston, Mass., and not Francis Drake, as reported by Canadian Press.

TO TRAIN FOR NURSE — Miss Mary MacKinnon, of Charlottetown, has entered the Brockton Hospital to train for a nurse. For the past year Miss MacKinnon taught in the Cross Roads School. The school was in a state of chaos when she took it; she worked early and late, and by her untiring energy brought it up to a high state of efficiency. She won the affection of all her pupils.

TO STUDY NURSING — Miss Emma Lane, of Bunbury, left on Sept. 10th, to enter the Winchester Hospital to train for a nurse. Miss Lane is only 19 years old. Two years ago she graduated from the Union Commercial College, after completing the two year course in one year. For the past two years, she has been employed as Commercial teacher in the U. G. College. She also completed a special course of training from the Gregg Stenography School in New York City. She is an accomplished musician, having taken lessons on the piano in Notre Dame Convent, Charlottetown. She is an exceptionally bright, intelligent girl, one who will make a success of anything she undertakes.

Minard's Linninet for Gtapes.

PERSONALS
Miss Hazel Kennedy, Bredaibane, left Saturday morning on a visit to Boston and New York.

Miss Mabel Gillis, Montague, spent the week end in Winsloe, the guest of her friend Miss Laura Cudmore.

Miss Ethel Murphy, of the nursing staff of Essex Co. Hospital, Middletown, Mass., passed through Summerside on Friday on her way back to resume her work. Miss Murphy spent two month's vacation on the Island visiting friends and relatives.

Waterfront Directory

- Bruce Stewart's Wharf
- S. S. Harland, Capt. MacLaine in charge.
- S. S. Hochelega on Picou route. Revenue Cutter, Conestoga, Capt. Coffin in port.
- Tug Rona, Capt. Belliea in port.
- Railway Wharf
- Coal Barge Bitobee, with coal for the Railway, Capt. J. McPhee in charge.
- D. P. W. Dredge No. 115, Capt. MacLeod, has resumed her work dredging out the railway dock.
- Tug Canso, Capt. Swin, attending Dredge No. 115 at Railway Wharf.
- Tug Lisgar, Capt. Gamble, attending dredge No. 115 at Railway Wharf.
- Buntain Wharf
- Motor Sloop Millie B., Capt. H. C. Brown, in port.
- Schr. Bonus, Capt. Boudreau in port.
- Marine Wharf
- Schr. Eliza Coreham, Capt. MacLeod in port.
- Paolis' Wharf
- Schr. Fred & Norman, Capt. Cohon in port.
- Schr. Victor W. T., Capt. Sundby in port.
- Carvels Wharf
- Motor Sloop Ellen B., Capt. Stanley in port.
- Pickards Wharf
- Schr. Hazel W., Capt. Munn, in port.
- Caraghers Wharf
- Schr. Nellie J. King, Capt. Murray in port.

Address and Presentation

TO FORMER MEMBER OF THE STAFF OF HYNDMAN & CO., LTD.

On Saturday morning Miss Sadie Brown, who has held a responsible position on the staff of Hyndman & Co., Ltd., for a number of years, was presented by the firm and her associates with an address and valuable gift, expressing the high appreciation of her services to the firm and general regret at her retirement.

Miss Brown very gratefully expressed her appreciation and thanks for the presentation and her sincere regrets on leaving the firm.

Miss Brown, whose home is in Wood Islands, is leaving shortly to join other members of the family in Boston.

ALBANY AND VICINITY

Messrs. Richards and White are busily engaged enlarging their store.

Mr. Reginald L. Buell, Watkins dealer, is busy supplying his old customers with household necessities. Mr. Buell intends carrying a full line of goods and purposes making regular trips over his territory.

Mr. and Mrs. George Jackson, of Buffalo, N.Y., Mrs. William Poole of Souris, Mrs. J. R. Clow of Point Pleasant, and Messrs. George and Wesley Jenkins, of Point Pleasant, motored to Abney recently for the purpose of visiting friends there.

Miss Ruby Reynolds returned to her home at Murray River after a prolonged visit at Abney. Mrs. John Moore has been visiting friends at Trenton, N.S. Mrs. John R. Buell has returned home from Sturgeon.

The blueberry industry is about drawing to a close for this season, there being large quantities of them marketed. Some families made upwards of one hundred dollars.

The Misses Marjorie and Jean Reynolds made a short visit at Abney recently.

Mr. and Mrs. E. H. Buell, Mr. and Mrs. Forest Clow and daughter, Doris, Mrs. Ernest Clow and daughter, Dorothy and the Misses Helen and Ruby Reynolds motored to Georgetown recently.

Tourist Traffic Increases in New Brunswick

FRERICTON, Sept. 15.—Tourist travel to New Brunswick in the 1928 season showed a substantial increase of more than 30 per cent, according to statistics gathered by the New Brunswick Government bureau of information and tourist travel, covering the 1928 season up to Aug. 31.

Permits issued for tourists' automobiles from the United States at Canadian customs houses at international boundary points in this province for stays of longer periods than twenty-four hours totalled 21,388 up to Aug. 31 for the present season as compared with 17,059 for the corresponding period of last year, an increase of 25 per cent. It is estimated that touring parties attracted to New Brunswick from Ontario and Quebec and the other Maritime Provinces this year have been twice as numerous as last year, making the gross increase in tourists coming to New Brunswick more than 30 per cent over last year.

The figures showing the number of United States touring parties entering New Brunswick are supplied by the Federal National Revenue Department and are official. These show that 228,888 United States owned automobiles entered New Brunswick this season up to Aug. 31 through the twenty-three ports of entry in this province along the international boundary. Of this number 21,388 cars with tourist parties were granted permits for stays of more than twenty-four hours and brought genuine tourists into this province for vacations up to as long as sixty days.

Potato digging is in operation and some of the early varieties are being disposed of at 50 cents a bushel. We learn that the starch factory in this vicinity, which has been closed for some time, will be in operation again this Fall. No doubt this is a good move on the part of the operating parties.

The Misses Minetta and Blanche Buell have returned to Charlottetown to take up their duties as householders.

CONSIDER ANTIDOTES TO POISON GAS THREAT

(Canadian Press.)
LONDON, Sept. 18.—Novel measures to counteract the effect of deadly gas-bombs dropped by aeroplanes on London in possible future wars are being considered, but such expedients as are suggested would cost enormous sums and would provide only a small measure of protection against such a destructive force as could be launched, judging by the recent mock air attack that London experienced.

Emergency supplies of gas masks for every man, woman and child would be one measure of safety. Another would be the installation at every air-inlet of the ordinary house of "seals" of chemical antidotes, which would render each house gas-proof. A third precaution is the training of special gas-squads, men wearing gas-proof clothing and masks and equipped with a spraying mechanism to lay and neutralize gas clouds in the streets.

And the provision of "community" dugouts is suggested by subsidizing motor companies to build four and five story garages underground on the condition that these could be used as a bomb-proof shelters in time of war, for large numbers of people.

The verdict on the giant mock attack causes many gloomy predictions. It is estimated that in actual warfare at least 500 tons of bombs would have been successfully launched on the capital. Although some raiding formations suffered heavy losses from anti-aircraft fire and the defending fighters, more than half the "enemy" bombers evaded the defence. The time factor is stressed by those who figure that at least 11 attacks were in progress before the enemy planes had been in sight of London for more than an hour.

SALUTES HIS OWN EFFIGY.

(Canadian Press.)
LONDON, Sept. 18.—Lord Melchett, formerly Sir Alfred Mond, is the only peer who, strolling down to the House of Lords by way of Millbank and Avington street, can salute his own effigy.

The new Mond Building (the headquarters of Imperial Chemical Industries, Ltd.) in Millbank is now rapidly approaching completion, and the removal of the scaffolding has revealed the impressive head of Lord Melchett carved in gleaming stone above the central doorway. It looks out across the river with an Olympian calm, and small boys, touring London during their holidays, speculate as to whether it is an allegorical head of Father Thames until they catch sight of

the carved lettering "Alfred Mond." This portrait head in stone is one of a series adorning this building, which is the latest of London's architectural monuments. The others are such great chemists as Priestly, Alfred Nobel, Lavoisier, Liebig, McGowan and Ludwig Mond.

DEPENDENTS OF SETTLERS TO GET LOW FARE TO CANADA

LONDON, Sept. 18.—The British and Canadian Governments have co-operated in arranging to grant assistance toward wives and children of settlers not employed on the land in Canada who left before June 6 last. It is announced today.

The settler must first satisfy the Immigration Department at Ottawa that he is satisfactorily settled in the Dominion, and has a reasonable prospect of being able to support his family. Passage rates for adults under this plan will be \$15.75, including steamship fare, while the children, provided they are under 17 years of age, will be taken across to the Dominion and their father free.

The scheme does not apply to settlers on the land, as arrangements have already been made for the dependents of this class.

Tax on U.S. Bonds

Canadians are now being taxed on income from bonds of United States companies they hold, in accordance with the new revenue law of that country. We shall be pleased to advise how you can obtain exemption from, or a refund of, this tax.

Merely send us full particulars of the U.S. bonds you own. There is no charge for this service.

McLEOD, YOUNG WEIR & CO.
Limited
Metropolitan Bldg., Toronto
MONTREAL OTTAWA
LONDON HAMILTON
NEW YORK